



GAT MONTHLY MEMBERSHIP PROGRESS REPORT

Results as of: 2/28/2023

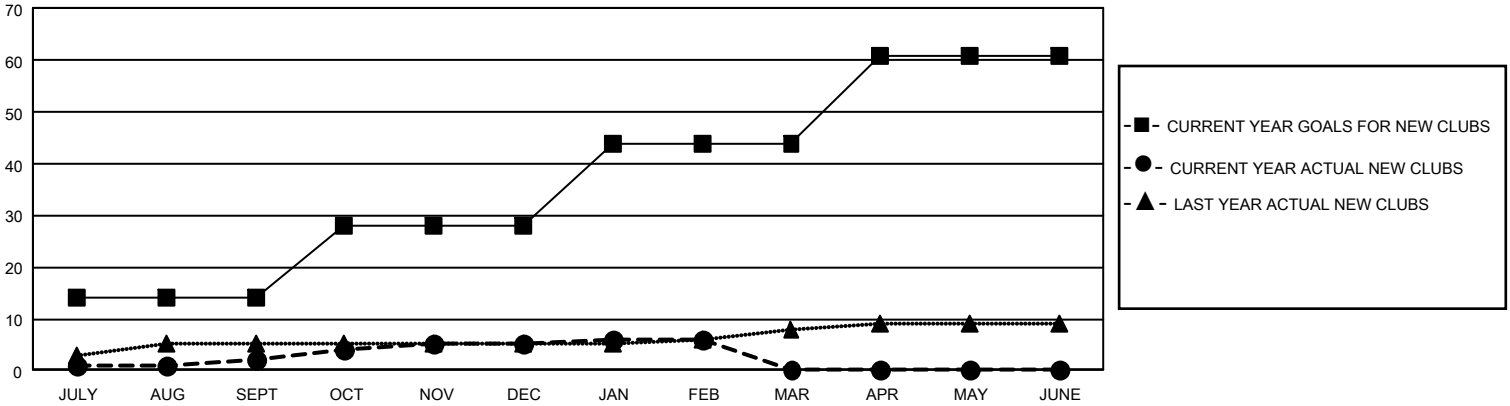
GAT Constitutional Area 5 - China

REPORT DOES NOT INCLUDE CLUBS IN UNDISTRICTED AREAS.

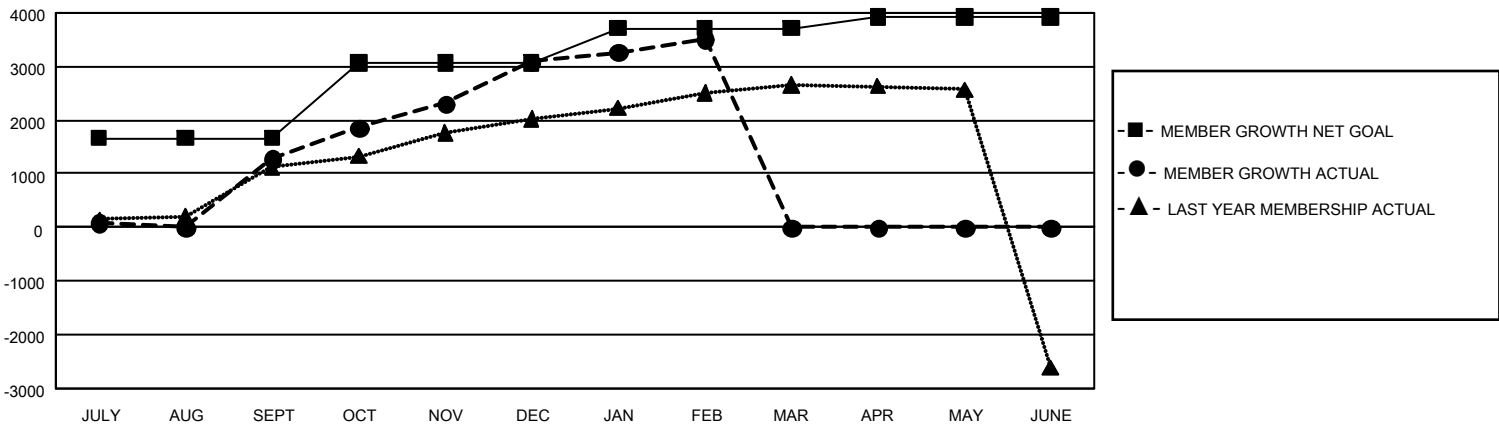
Clubs			
RESULTS FOR 2022-2023			
QUARTER	NEW CLUB GOAL	NEW CLUBS	DROPPED CLUBS
JULY/AUG/SEPT	42	2	12
OCT/NOV/DEC	42	3	0
JAN/FEB/MAR	48	1	0
APR/MAY/JUNE	51	0	0

Members			
RESULTS FOR 2022-2023			
QUARTER	MEMBER GROWTH NET GOAL	MEMBER GROWTH ACTUAL	DROPPED MEMBERS ACTUAL (including transfers)
JULY/AUG/SEPT	1668	1,822	346
OCT/NOV/DEC	1398	2,261	228
JAN/FEB/MAR	651	575	108
APR/MAY/JUNE	202	0	0

GOALS AND ACTUAL NEW CLUBS CUMULATIVE



GOALS AND ACTUAL MEMBERS CUMULATIVE



DROPPED CLUBS: 12	
DROPPED MEMBERS	
DECEASED	10
CLUB CANCELLED	89
OTHER	583
TOTAL	682

791 CLUBS OF 1,366 ADDED 1 OR MORE NEW MEMBERS

[CLICK HERE FOR CUMULATIVE MEMBERSHIP DATA](#)

GENDER DISTRIBUTION	
MALE	20,945 (61.75%)
FEMALE	12,972 (38.25%)
NON BINARY	0 (0.00%)
PREFER NOT TO ANSWER	0 (0.00%)
TOTAL FAMILY UNIT MEMBERS	2,137
FAMILY MEMBERS PAYING HALF DUES	1,099